

Campus Budget & Planning Forum

Fall 2024

Sonoma State University

Thursday, November 14th, 2024

**SONOMA
STATE**
UNIVERSITY

UNIVERSITY BUDGET
& RESOURCE PLANNING

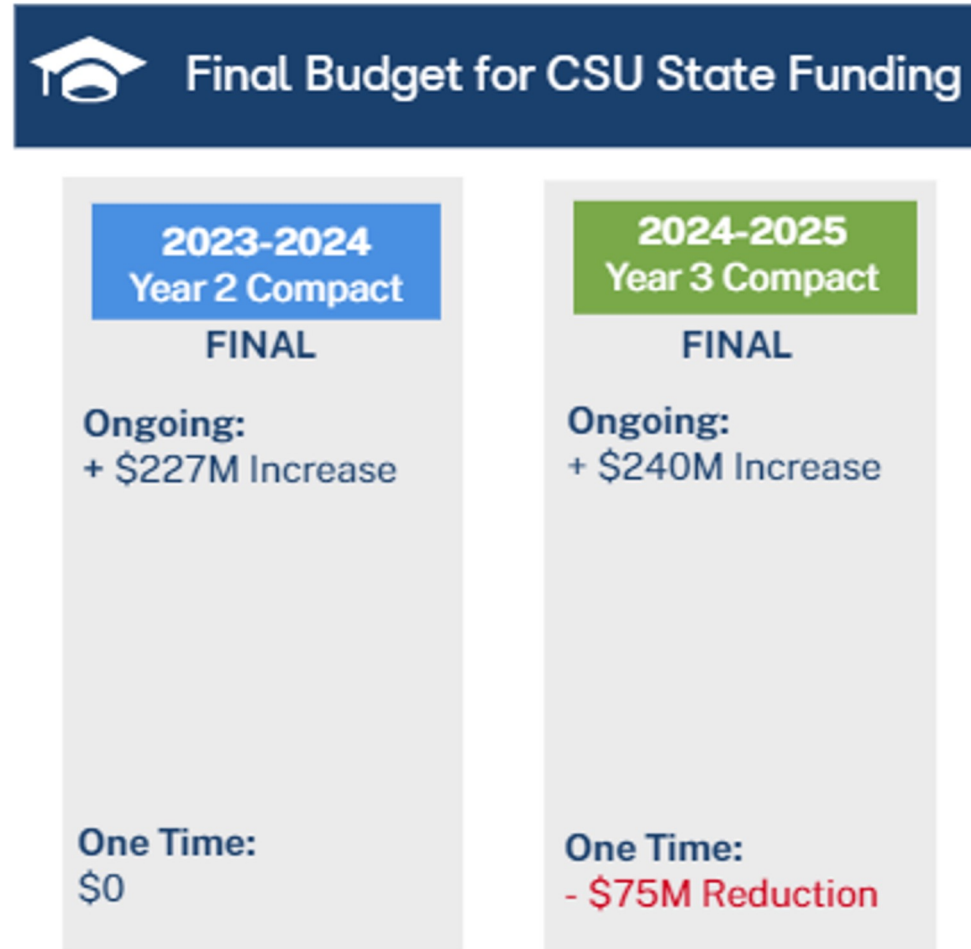
Fall Budget Briefing

Laura Lupei
AVP, University Budget & Resource Planning

**SONOMA
STATE**
UNIVERSITY

UNIVERSITY BUDGET
& RESOURCE PLANNING

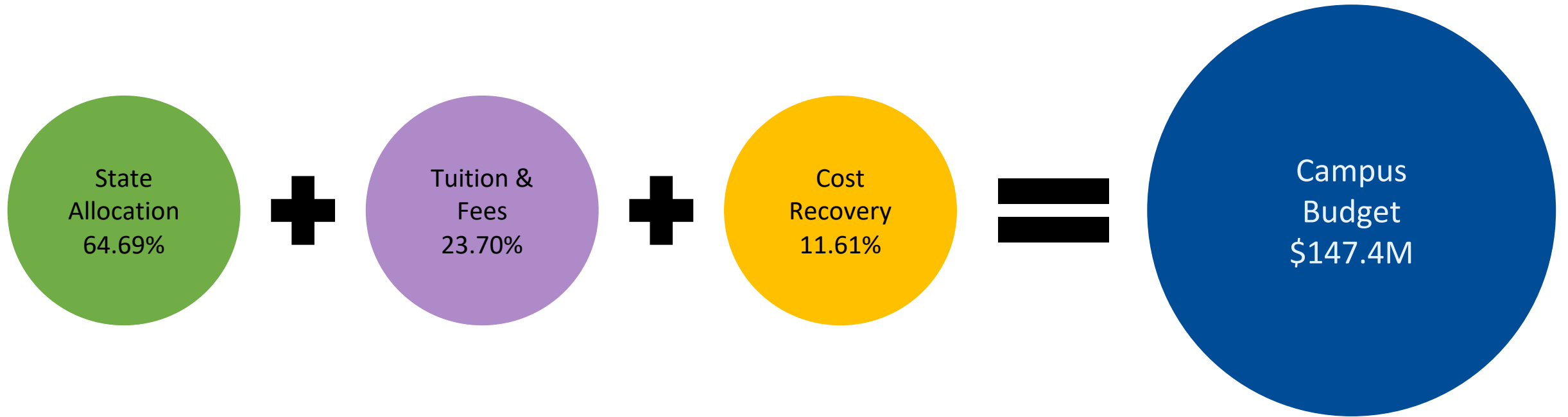
The Final State Budget for 2024-2025 has been approved and provides increased base funding for the CSU.



Total increases and decreases to the campus revenue budget total to an increase of \$9.7M.

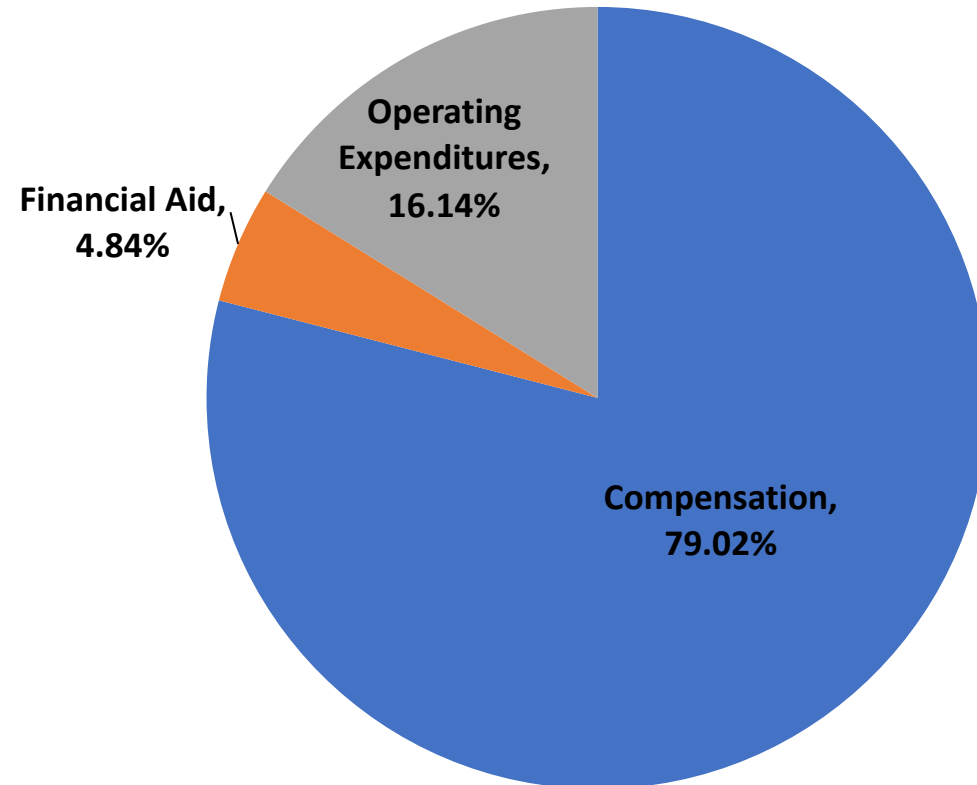
| | |
|--|----------------------|
| Prior Year Campus Operating Budget | \$137,696,642 |
| 2023-2024 and 2024-2025 Compensation Pool and Benefits | \$7,258,000 |
| GI 2025 and Student Support | \$472,000 |
| Operational Costs and Compliance Programs | \$1,123,000 |
| Campus Adjustments to Revenue | \$3,455,981 |
| Enrollment Reallocation | (\$2,199,000) |
| SUG Reallocation | (\$395,000) |
| Total, Changes to Campus Allocation and Revenue Sources | \$9,714,981 |
| 2024-2025 Adjusted Base Revenue Budget | \$147,411,623 |

The Campus Budget is composed of three primary funding sources: State Allocation, Student Fees and Tuition, and Cost Recovery



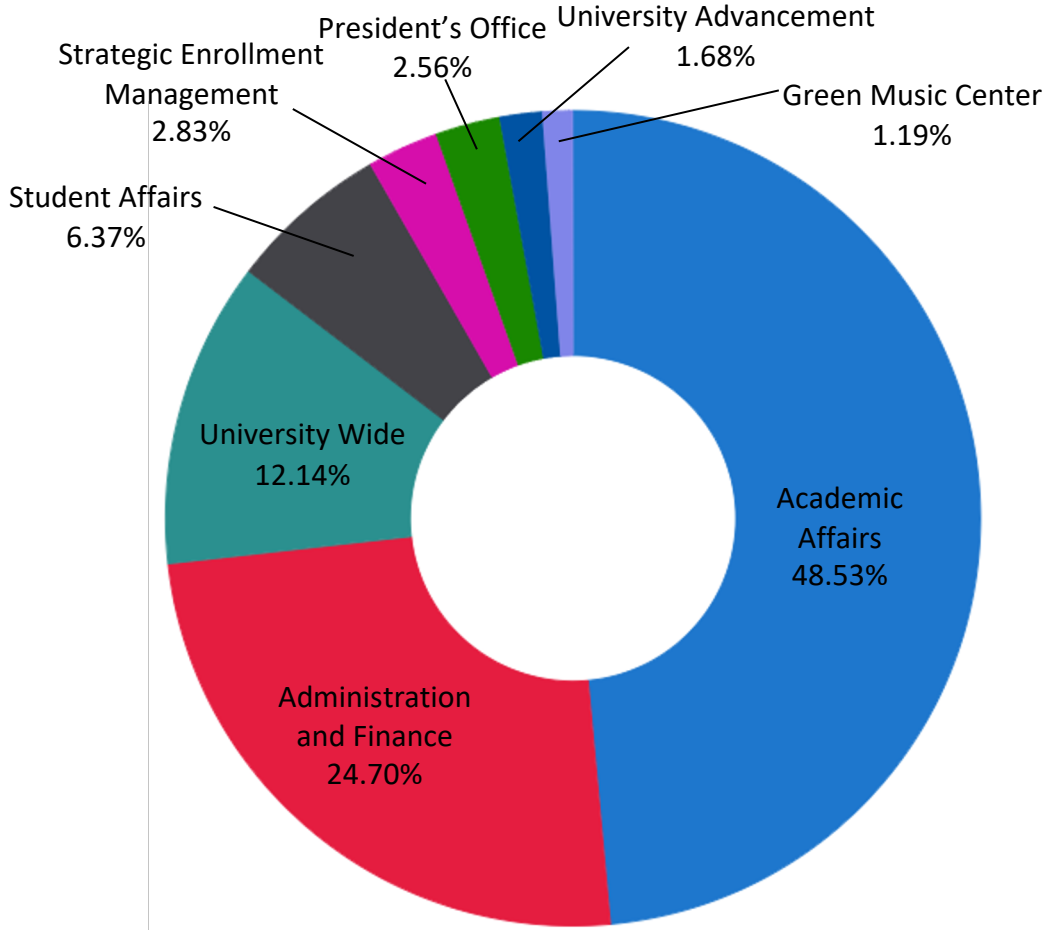
Total 24/25 Campus Revenue Budget: \$147,411,623

The majority of the Campus Budget is spent on salaries and benefits.



**Total 24/25 Campus Expenditure Budget:
\$154,826,436**

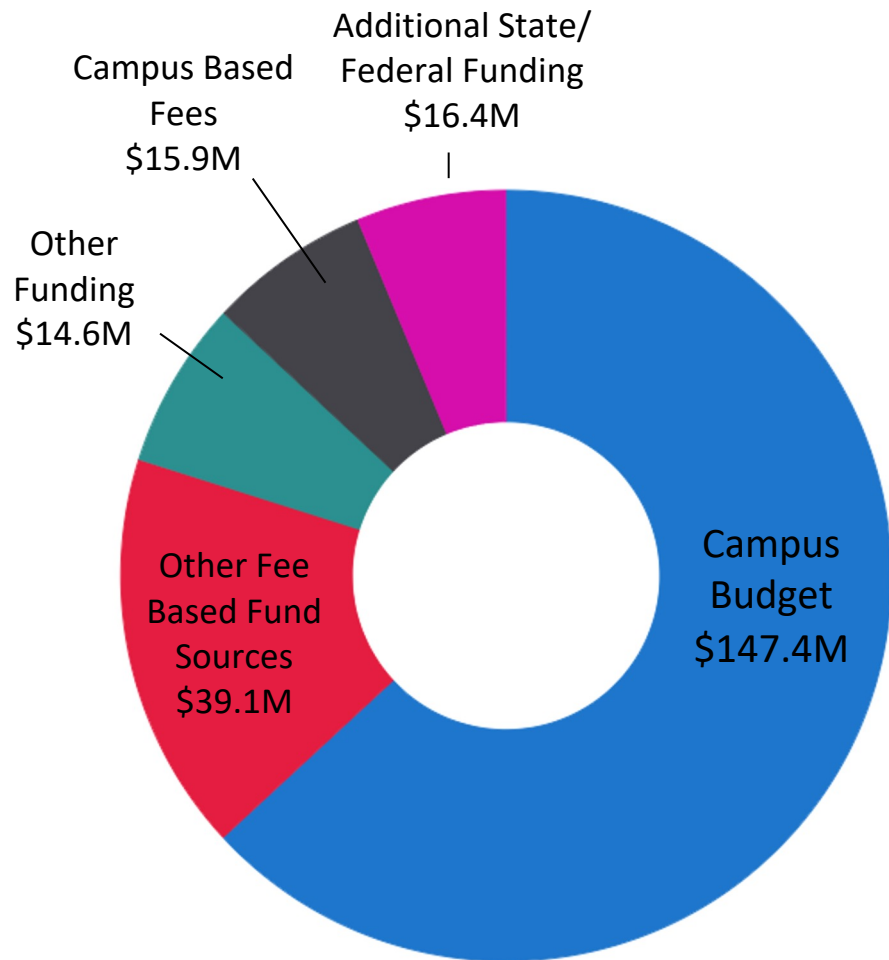
The Campus Budget can be split out by Division with Academic Affairs being the largest Division on campus.



**Total 2024-2025
Campus Expenditure
Budget:
\$ 154,826,436**

*Benefits are distributed to Divisions
State University Grants are not included
The Compensation Pool was fully distributed at the time the budget was finalized*

The University has other funding sources in addition to the Campus Budget. These funding sources include student fees, self support program revenue and grants.



| Source | Total | |
|---|----------------------|----------------|
| Campus Budget | \$147,411,623 | 63.14% |
| Additional State/Federal Funding | | |
| Lottery | \$1,077,000 | |
| Office of Research and Sponsored Programs | \$15,356,427 | |
| | \$16,433,427 | 7.04% |
| Campus-Based Fees | | |
| Associated Students | \$2,556,015 | |
| Campus Union | \$6,321,162 | |
| Center for Performing Arts IRA Funding | \$543,151 | |
| Counseling and Psychological Services | \$847,268 | |
| Instructionally Related Activities | \$677,759 | |
| Intercollegiate Athletics IRA Funding | \$2,125,149 | |
| Library IRA Funding | \$213,710 | |
| Children's School IRA Funding | \$72,033 | |
| Student Health Center | \$2,523,018 | |
| | \$15,879,265 | 6.80% |
| Other Fee Based Fund Sources | | |
| Residential Education and Campus Housing | \$33,041,732 | |
| Extended Education | \$3,968,222 | |
| Transportation and Parking Services | \$2,093,738 | |
| | \$39,103,692 | 16.75% |
| Other Funding | | |
| Green Music Center | \$3,075,707 | |
| Sonoma State Enterprises | \$9,112,431 | |
| Sonoma State University Foundation | \$584,075 | |
| Endowment Earnings | \$1,864,545 | |
| | \$14,636,758 | 6.27% |
| Total University Resources | \$233,464,765 | 100.00% |

2024-2025 Campus Deficit Planning

Campus expenses exceed revenues by \$7.4M.

| | | |
|-----------------------------------|-----------|--------------------|
| 2024-2025 Campus Budgeted Revenue | \$ | 147,411,623 |
| 2024-2025 Campus Budgeted Expense | \$ | 154,826,436 |
| 2024-2025 Base Deficit | \$ | (7,414,813) |

With changes to revenue and cost, the total deficit for the 2024-2025 year was \$12.4M.

| | <u>2024-2025</u> |
|--|------------------------|
| 2023-2024 Base Deficit | \$ (9,261,453) |
| Increase in Tuition Revenue | \$ 1,911,500 |
| Adjustments to Cost Allocation Revenue | \$ 1,832,280 |
| Adjustments to Other Campus Revenue | \$ 40,000 |
| 6% Tuition Increase (Net) | \$ 38,000 |
| 3% Enrollment Reallocation | \$ (2,199,000) |
| Total Base Changes in Revenue | \$ (7,638,673) |
| Unfunded Mandatory Cost | \$ (1,066,233) |
| New Unfunded Positions (Facilities, SEM) | \$ (277,584) |
| Unfunded Compensation (23/24 & 24/25) | \$ (3,432,323) |
| Total Base Changes in Cost | \$ (4,776,140) |
| Total, Base Deficit | \$ (12,414,813) |

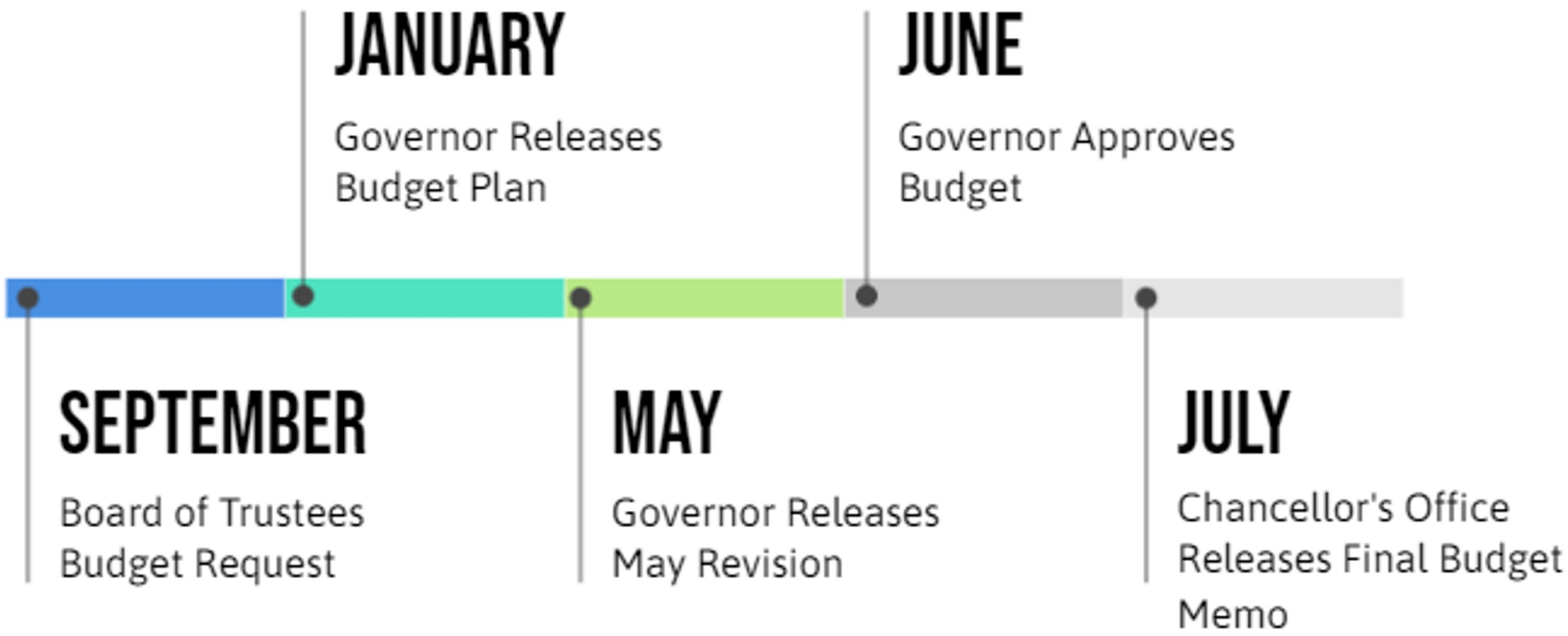
Base reduction strategies to align expenses with current enrollment and available revenues were necessary to reduce the deficit.

| | |
|---|------------------------|
| Total 2024-2025 Base Deficit | \$ (12,414,813) |
| Base Strategies | |
| Realign Instructional Budget | \$ 4,000,000 |
| Academic Affairs Reorganization Reductions | \$ 1,000,000 |
| Total, Base Strategies | \$ 5,000,000 |
| Net Deficit Remaining | \$ (7,414,813) |
| <i>Plus Share of System-Wide One-Time \$75M Reduction</i> | <i>\$ (1,043,000)</i> |
| Total Funds Needed | \$ (8,457,813) |

To close the remaining budget gap for 2024-2025 we need to identify one-time resources.

| | |
|---|-----------------------|
| Net Deficit Remaining | \$ (8,457,813) |
| University Wide - One Time Strategies | |
| Deficit Strategies Rollforward from PY | \$ 1,150,000 |
| Summer 2024 Revenue | \$ 1,548,425 |
| Use of Campus Reserves - Operating | \$ 1,000,000 |
| Use of Campus Reserves - Capital | \$ 1,639,388 |
| IDC Reserve | \$ 1,720,000 |
| 24/25 Salary Savings Sweep (Estimate) | \$ 600,000 |
| 24/25 Unallocated Funds Held Centrally (Estimate) | \$ 800,000 |
| Total, University Wide One Time Strategies | \$ 8,457,813 |
| Net Deficit Remaining | \$ - |
| Base Deficit to Roll Forward to 25/26 | \$ (7,414,813) |

Now that the 2024-2025 budget is finalized, the 2025-2026 budget planning cycle begins.



2024-2025 Campus Budget Plan available on [OpenBook](#)

Accessed through the Budget Office website:
budget.sonoma.edu

Questions? Please email budget@sonoma.edu

Spring & Fall 2025 Enrollment Update

Dr. Ed Mills

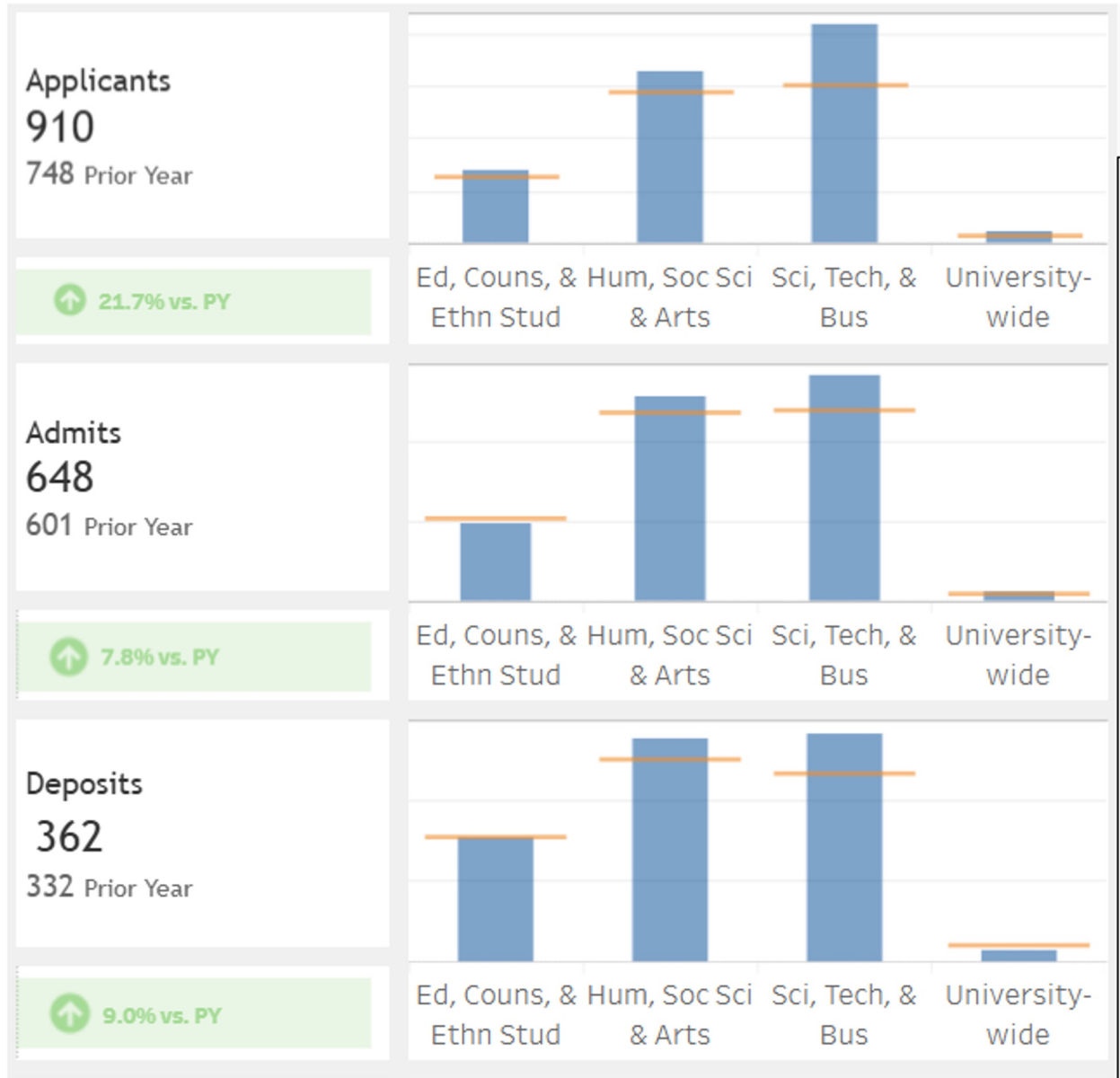
Sonoma State University



Recruitment Videos by Area



Spring 2025 Apps, Admits & Deposits as of 11/13/24



What do we need for Spring 2025?

Target Spring 2025 Enrollment = 5,450 to 5,550

- New Student Target = 400 to 500
(Spring 2024 New Students = 235)
- Fall to Spring Continuation Rate at or above 91%
- Anticipated Fall 2024 Graduates ~ 450

Note: Spring 2024 Total Enrollment was 5,533



Spring 2025 New Student Opportunities

- Spring 2025 Application Deadline is 12/1/24
(Students can deposit for spring through Jan 3)
- Students who do not initially qualify can request reconsideration or appeal into mid-December



- Spring 2025 Undergraduate Orientation is Friday November 15th
(Ongoing spring orientation continues online)
- New Transfer Students who attend Friday's Orientation will have the opportunity to register with Juniors the following week

Building Focus on Community College Transfer

Sonoma State's 2-year Partners: 2022 - 2024

| <i>Community College</i> | <i>Apps</i> | <i>Admits</i> | <i>Enrolled</i> | <i>Yield: Apps to Enroll</i> |
|---------------------------|-------------|---------------|-----------------|------------------------------|
| Santa Rosa Junior College | 2202 | 1950 | 1139 | 51.7% |
| College of Marin | 411 | 351 | 122 | 29.6% |
| Napa Valley College | 402 | 356 | 156 | 38.8% |
| Mendocino College | 221 | 204 | 99 | 44.7% |

Note: Totals include 2022/23, 2023/24, and Fall 2024 - 5 semester totals

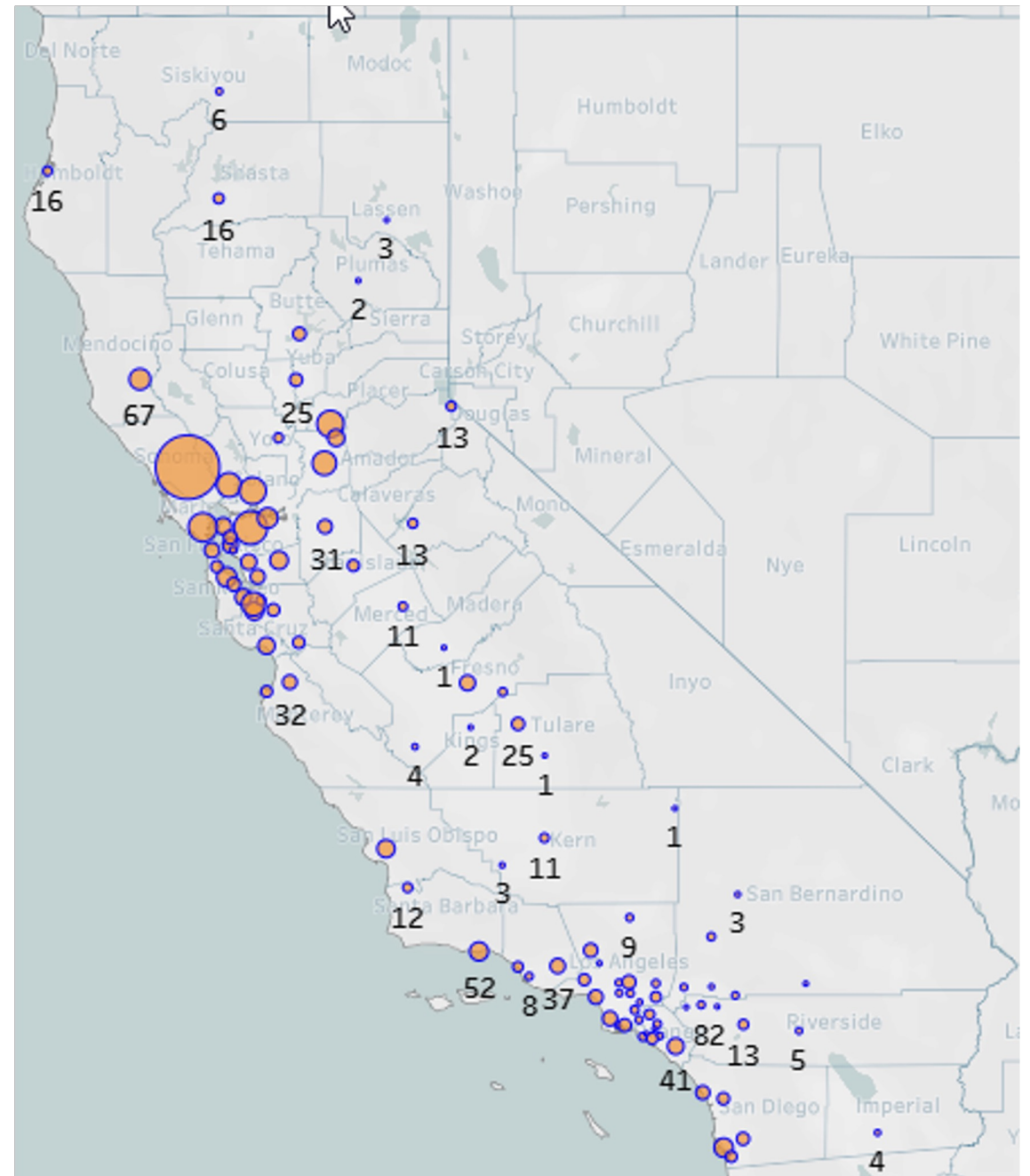
Building Focus on Community College Transfer

Expanding Sonoma State's Reach

| <i>Community College</i> | <i>Apps</i> | <i>Admits</i> | <i>Enrolled</i> | <i>Yield: Apps to Enroll 2022-24</i> |
|---|-------------|---------------|-----------------|--------------------------------------|
| Diablo Valley College | 610 | 510 | 92 | 15.1% |
| Solano Community College | 359 | 296 | 78 | 21.7% |
| Los Rios District | 489 | 388 | 70 | 14.3% |
| Sac City, American River, Cosumnes River, Folsom Lake | | | | |
| Sierra College | 306 | 246 | 44 | 14.4% |

Next up: South Bay, San Diego County, Los Angeles County CC System

Fall 2024 New Community College Transfer Student Geographic Origin



Moving from an Outreach to a Recruitment Model

Priority Applications Deadline = December 2nd

- Fall 2025 Apps = 3,421
(About 300 Apps behind last year on this date)
- Fall 2025 Admits = 2,289
- Fall 2025 Deposits = 46
(136 Students offered Early Admission at Preview Day)

Note: Fall 2025 Applications will be open through April/May

In a recruitment model, conversion and yield are the most critical elements of the enrollment process.



Are you doing some outreach or want to help with recruitment?

Register Visits, Class Trips, and Tours

On the SSU Website Go To:

Admissions > Experience SSU > Campus Tours

Sign Up to be a Faculty/Staff Ambassador

Email Kelley Kaslar at kaslar@sonoma.edu

Active Referral

Send Prospective Students or Colleagues in K-12 and Community Colleges to us at outreach@sonoma.edu

Or, just call or email Ed Mills at millsed@sonoma.edu





Question & Answer Session

**SONOMA
STATE**
UNIVERSITY

UNIVERSITY BUDGET
& RESOURCE PLANNING